

Klarinet II. B



Dechová hudba

Písně k průvodu Božího Těla

Klar. II. B

1

Fanfára Velehrad

Moderato 4

f

Detailed description: This is the first musical staff. It begins with a treble clef, a common time signature (C), and a 4-measure rest. The tempo is marked 'Moderato'. The key signature has one flat (B-flat). The music starts with a dynamic marking of *f* (forte). The melody consists of eighth and quarter notes with accents, ending with a fermata on a half note.

2

Kristus vítězí (fanfára)

Slavnostně 8

f

Detailed description: This is the second musical staff. It begins with a treble clef, a 2/4 time signature, and an 8-measure rest. The tempo is marked 'Slavnostně' (solemnly). The key signature has one flat (B-flat). The music starts with a dynamic marking of *f* (forte). The melody is composed of quarter and eighth notes, ending with a fermata on a half note.

3

Chvalte ústa

Detailed description: This is the third musical staff, consisting of two lines. It begins with a treble clef, a common time signature (C), and a key signature of one sharp (F#). The melody is written across two staves, featuring quarter and eighth notes with various articulations like slurs and accents. The piece concludes with a key signature change to two sharps (F# and C#).

4

K svátku tajemnému

Detailed description: This is the fourth musical staff. It begins with a treble clef, a 2/4 time signature, and a key signature of two sharps (F# and C#). The melody is written across two staves, featuring quarter and eighth notes with slurs and accents. The piece ends with a double bar line.

Klar. II. B

5 Ježíši Králi

Musical score for 'Ježíši Králi' in B-flat major, common time. The score consists of three staves. The first staff begins with a treble clef, a key signature of two flats (B-flat major), and a common time signature. The melody features eighth and sixteenth notes with various rests. The second staff starts with a dynamic marking of *mf* and continues the melodic line. The third staff concludes the piece with a *rit.* marking and a final sharp sign at the end of the line.

6 K nebesům se orla vzletem

Musical score for 'K nebesům se orla vzletem' in G major, 3/4 time. The score consists of two staves. The first staff begins with a treble clef, a key signature of one sharp (G major), and a 3/4 time signature. The melody is characterized by dotted rhythms and eighth notes. The second staff starts with a dynamic marking of *mf* and continues the piece, ending with a double bar line and a sharp sign.

7 Vzhůru srdce

Musical score for 'Vzhůru srdce' in G major, 3/4 time. The score consists of two staves. The first staff begins with a treble clef, a key signature of one sharp (G major), and a 3/4 time signature. The melody features eighth notes and dotted rhythms. The second staff continues the piece, ending with a double bar line.

Klar. II. B

8

Andělský chlebe

Musical notation for 'Andělský chlebe'. The piece is in G major and 6/4 time. It consists of two staves. The first staff contains the first two measures, and the second staff contains the next two measures. The piece concludes with a double bar line and a 3/4 time signature.

9

Jezu Kriste štědrý kněže

Musical notation for 'Jezu Kriste štědrý kněže'. The piece is in G major and 3/4 time. It consists of two staves. The first staff contains the first two measures, and the second staff contains the next two measures. The piece concludes with a double bar line and a 2/4 time signature.

10

Klaním se Ti vroucně

Musical notation for 'Klaním se Ti vroucně'. The piece is in B-flat major and 2/4 time. It consists of two staves. The first staff contains the first two measures, and the second staff contains the next two measures. The piece concludes with a double bar line and a common time signature.

11

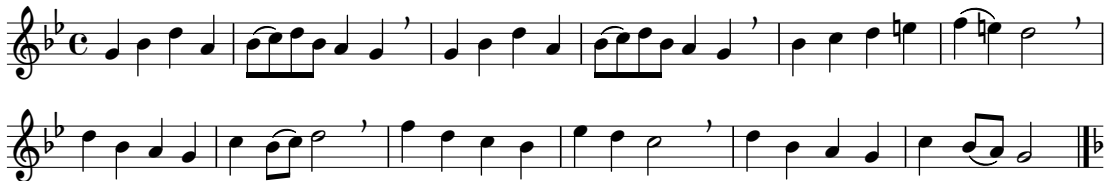
Pojďte uctít poklonou

Musical notation for 'Pojďte uctít poklonou'. The piece is in common time. It consists of one staff containing the entire piece. The piece concludes with a double bar line.

Klar. II. B

12

Skrytý Bože



13

Svatý, Svatý



14

Vítej, vítej



Klar. II. B

15

Kde jsi můj Ježíši

Musical score for Klarinet II B, piece 15. The score consists of two staves. The key signature has two flats (B-flat and E-flat), and the time signature is 3/4. The melody is written on the upper staff, and the accompaniment is on the lower staff. The piece ends with a double bar line and a repeat sign.

16

Ó srdce Páně

Musical score for Klarinet II B, piece 16. The score consists of one staff. The key signature has two flats (B-flat and E-flat), and the time signature is 6/8. The melody is written on the staff. The piece ends with a double bar line and a repeat sign.

17

Ó Jezu, hoste nebeský

Musical score for Klarinet II B, piece 17. The score consists of two staves. The key signature has one sharp (F-sharp), and the time signature is common time (C). The melody is written on the upper staff, and the accompaniment is on the lower staff. The piece includes first and second endings, indicated by '1.' and '2.' above the notes. The piece ends with a double bar line and a repeat sign.

18

Pozdraven buď ve svátosti

Musical score for Klarinet II B, piece 18. The score consists of two staves. The key signature is natural (C), and the time signature is common time (C). The melody is written on the upper staff, and the accompaniment is on the lower staff. The piece ends with a double bar line and a repeat sign.

Klar. II. B

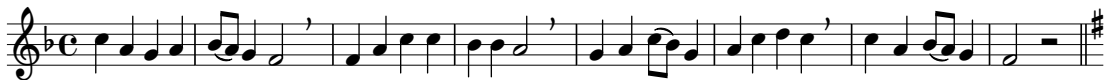
19

Svátosti drahá



20

Ejhle oběť



21

Bože, chválíme Tebe



22

Linkovy fanfáry



Obsah

1	Fanfára Velehrad	12	Skrytý Bože
2	Kristus vítězí	13	Svatý, Svátý
3	Chvalte ústa	14	Vítej, vítej
4	K svátku tajemnému	15	Kde jsi můj Ježíši
5	Ježíši Králi	16	Ó srdce Páně
6	K nebesům se orla vzletem	17	Ó Jezu, hoste nebeský
7	Vzhůru srdce	18	Pozdraven buď ve svátosti
8	Andělský chlebe	19	Svátosti drahá
9	Jezu Kriste, štědrý kněže	20	Ejhle oběť
10	Klaním se Ti vroucně	21	Bože, chválíme Tebe
11	Pojďte uctít poklonou	22	Linkovy fanfáry
Instrumentace a harmonizace			
č. 2, 3, 4, 7, 8, 9, 10, 11, 12, 13, 15, 17, 18, 19, 20, 22		Petr Strakoš	
č. 1, 5, 6, 14, 16, 21		Miloš Machek	
Opis notového záznamu 11/2017		Josef Chuchma	
Pro čtyřhlasou harmonii jsou nutné tyto hlasy: Kř. I., Kř. II., Tenor a Bas. Ostatní hlasy jsou doplňující.			

