

# Horna I. F



**Dechová hudba**

**Písně k průvodu Božímu Tělu**

Horna I. F

1

Fanfára Velehrad

Moderato

Musical score for Horn I, first movement 'Fanfára Velehrad'. The score consists of two staves. The first staff is in C major, 2/4 time, with a tempo marking of 'Moderato'. It begins with a treble clef and a key signature of one flat. The second staff is in C major, 2/4 time, with a dynamic marking of 'f'. It begins with a treble clef and a key signature of one flat. The piece concludes with a key signature change to B-flat major and a time signature change to 3/4.

Slavnostně

8

2

Kristus vítězí (fanfára)

Musical score for Horn I, second movement 'Kristus vítězí (fanfára)'. The score consists of one staff. It is in B-flat major, 2/4 time, with a tempo marking of 'Slavnostně' and a measure rest of 8 measures. It begins with a treble clef and a key signature of two flats. The piece concludes with a key signature change to C major.

f

3

Chvalte ústa

Musical score for Horn I, third movement 'Chvalte ústa'. The score consists of two staves. It is in C major, 2/4 time, with a dynamic marking of 'f'. It begins with a treble clef and a key signature of one flat. The piece concludes with a key signature change to B-flat major and a time signature change to 3/4.

4

K svátku tajemnému

Musical score for Horn I, fourth movement 'K svátku tajemnému'. The score consists of two staves. It is in B-flat major, 2/4 time. It begins with a treble clef and a key signature of two flats. The piece concludes with a key signature change to C major.

## 5 Ježíši Králi

Musical score for 'Ježíši Králi' (5). The score is written for Horn I. F. It consists of two staves. The key signature is three flats (B-flat, E-flat, A-flat) and the time signature is common time (C). The first staff contains the main melody. The second staff contains a lower line, starting with a *mf* dynamic marking and a triplet of eighth notes. The piece concludes with a double bar line and a key signature change to two flats (B-flat, E-flat).

## 6 K nebesům se orla vzletem

Musical score for 'K nebesům se orla vzletem' (6). The score is written for Horn I. F. It consists of two staves. The key signature is three flats (B-flat, E-flat, A-flat) and the time signature is common time (C). The first staff contains the main melody. The second staff contains a lower line, starting with a *mf* dynamic marking. The piece concludes with a double bar line and a key signature change to two flats (B-flat, E-flat).

## 7 Vzhůru srdce

Musical score for 'Vzhůru srdce' (7). The score is written for Horn I. F. It consists of two staves. The key signature is three flats (B-flat, E-flat, A-flat) and the time signature is 3/4. The first staff contains the main melody. The second staff contains a lower line. The piece concludes with a double bar line.

Horna I. F

8

Andělský chlebe

Musical notation for 'Andělský chlebe' in 6/4 time. The piece consists of two staves. The first staff contains the first two measures, and the second staff contains the next two measures. The melody is written in a soprano clef. The piece concludes with a double bar line and a 3/4 time signature.

9

Jezu Kriste štědrý kněže

Musical notation for 'Jezu Kriste štědrý kněže' in 3/4 time. The piece consists of two staves. The first staff contains the first two measures, and the second staff contains the next two measures. The melody is written in a soprano clef. The piece concludes with a double bar line and a 2/4 time signature with a key signature change to B-flat major.

10

Klaním se Ti vroucně

Soli

Musical notation for 'Klaním se Ti vroucně' in 2/4 time. The piece consists of two staves. The first staff contains the first two measures, and the second staff contains the next two measures. The melody is written in a soprano clef. The piece concludes with a double bar line and a common time signature.

11

Pojďte uctít poklonou

Musical notation for 'Pojďte uctít poklonou' in common time. The piece consists of a single staff. The melody is written in a soprano clef. The piece concludes with a double bar line.

Horna I. F

12

Skrytý Bože

Musical score for Horn I, F major, 12 measures. The piece is in 4/4 time. The melody consists of quarter and eighth notes, with some slurs and accents. The key signature has two flats (Bb and Eb).

13

Svatý, Svatý

Musical score for Horn I, F major, 13 measures. The piece is in 4/4 time. The melody consists of quarter and eighth notes, with some slurs and accents. The key signature has two flats (Bb and Eb).

14

Vítej, vítej

Musical score for Horn I, F major, 14 measures. The piece is in 4/4 time. The melody consists of quarter and eighth notes, with some slurs and accents. The key signature has two flats (Bb and Eb). The first measure of the second staff is marked *mf*.

Horna I. F

15

Kde jsi můj Ježíši

Musical score for Horn I, F major, 3/4 time. The score consists of two staves. The first staff begins with a treble clef, a key signature of two flats (B-flat and E-flat), and a 3/4 time signature. The melody starts on G4, moving to A4, B-flat4, and C5. The second staff continues the melody, ending with a double bar line and a repeat sign.

16

Ó srdce Páně

Musical score for Horn I, F major, 6/8 time. The score consists of one staff with a treble clef, a key signature of two flats, and a 6/8 time signature. The melody starts on G4, moving to A4, B-flat4, and C5. The piece ends with a double bar line and a repeat sign.

17

Ó Jezu, hoste nebeský

Musical score for Horn I, C major, 4/4 time. The score consists of two staves. The first staff begins with a treble clef, a key signature of one flat (B-flat), and a 4/4 time signature. The melody starts on G4, moving to A4, B-flat4, and C5. The second staff continues the melody, ending with a double bar line and a repeat sign.

18

Pozdraven buď ve svátosti

Musical score for Horn I, C major, 4/4 time. The score consists of two staves. The first staff begins with a treble clef, a key signature of one flat (B-flat), and a 4/4 time signature. The melody starts on G4, moving to A4, B-flat4, and C5. The second staff continues the melody, ending with a double bar line and a repeat sign.

Horna I. F

19

Svátosti drahá



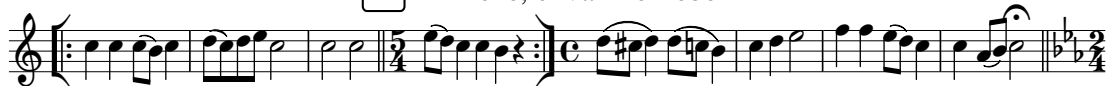
20

Ejhle oběť



21

Bože, chválíme Tebe



22

Linkovy fanfáry



## Obsah

1	Fanfára Velehrad	12	Skrytý Bože
2	Kristus vítězí	13	Svatý, Svátý
3	Chvalte ústa	14	Vítej, vítej
4	K svátku tajemnému	15	Kde jsi můj Ježíši
5	Ježíši Králi	16	Ó srdce Páně
6	K nebesům se orla vzletem	17	Ó Jezu, hoste nebeský
7	Vzhůru srdce	18	Pozdraven buď ve svátosti
8	Andělský chlebe	19	Svátosti drahá
9	Jezu Kriste, štědrý kněže	20	Ejhle oběť
10	Klaním se Ti vroucně	21	Bože, chválíme Tebe
11	Pojďte uctít poklonou	22	Linkovy fanfáry
<b>Instrumentace a harmonizace</b>			
č. 2, 3, 4, 7, 8, 9, 10, 11, 12, 13, 15, 17, 18, 19, 20, 22		Petr Strakoš	
č. 1, 5, 6, 14, 16, 21		Miloš Machek	
Opis notového záznamu 11/2017		Josef Chuchma	
Pro čtyřhlasou harmonii jsou nutné tyto hlasy: Kř. I., Kř. II., Tenor a Bas. Ostatní hlasy jsou doplňující.			

