

Horna II. F



Dechová hudba

Písně k průvodu Božímu Tělu

Horna II. F

1

Fanfára Velehrad

Moderato

f

Slavnostně 8

2 Kristus vítězí (fanfára)

f

3 Chvalte ústa

3

4 K svátku tajemnému

4

Horna II. F

5 Ježíši Králi

Musical score for Horn II, F, titled "Ježíši Králi". The score is in 2/4 time and features a key signature of three flats (B-flat, E-flat, A-flat). The melody is written on a single staff. The first measure is marked with a dynamic of *mf*. The second measure contains a triplet of eighth notes, also marked with a dynamic of *mf*. The piece concludes with a double bar line and a key signature change to two flats (B-flat, E-flat).

6 K nebesům se orla vzletem

Musical score for Horn II, F, titled "K nebesům se orla vzletem". The score is in 2/4 time and features a key signature of three flats (B-flat, E-flat, A-flat). The melody is written on a single staff. The first measure is marked with a dynamic of *mf*. The piece concludes with a double bar line and a key signature change to two flats (B-flat, E-flat).

7 Vzhůru srdce

Musical score for Horn II, F, titled "Vzhůru srdce". The score is in 3/4 time and features a key signature of one flat (B-flat). The melody is written on a single staff. The piece concludes with a double bar line.

Horna II. F

8

Andělský chlebe

Musical score for 'Andělský chlebe' (8). The score is written for Horn II in F major. It consists of two staves. The first staff begins with a treble clef, a 6/4 time signature, and a common time signature 'C'. The second staff ends with a double bar line and a 3/4 time signature.

9

Jezu Kriste štědrý kněže

Musical score for 'Jezu Kriste štědrý kněže' (9). The score is written for Horn II in F major. It consists of two staves. The first staff begins with a treble clef and a 3/4 time signature. The second staff ends with a double bar line and a 2/4 time signature with a flat sign.

10

Klaním se Ti vroucně

Soli

Musical score for 'Klaním se Ti vroucně' (10). The score is written for Horn II in F major. It consists of two staves. The first staff begins with a treble clef, a 2/4 time signature, and a flat sign. The second staff ends with a double bar line and a common time signature with a flat sign.

11

Pojďte uctít poklonou

Musical score for 'Pojďte uctít poklonou' (11). The score is written for Horn II in F major. It consists of one staff. The staff begins with a treble clef, a common time signature, and a flat sign. The piece ends with a double bar line and a fermata.

Horna II. F

12

Skrytý Bože

Musical notation for 'Skrytý Bože' (Horn II, F). The piece is in 4/4 time and B-flat major. The melody consists of two staves. The first staff begins with a treble clef, a key signature of two flats (B-flat and E-flat), and a common time signature (C). The melody features a series of quarter notes, followed by eighth-note pairs, and then quarter notes with a fermata. The second staff continues the melody with quarter notes and ends with a double bar line and repeat sign.

13

Svatý, Svatý

Musical notation for 'Svatý, Svatý' (Horn II, F). The piece is in 4/4 time and B-flat major. The melody is written on a single staff with a treble clef, a key signature of two flats, and a common time signature. It features a sequence of quarter notes, followed by eighth-note pairs, and quarter notes with a fermata. The piece concludes with a double bar line and repeat sign.

14

Vítej, vítej

Musical notation for 'Vítej, vítej' (Horn II, F). The piece is in 4/4 time and B-flat major. The melody is written on two staves with treble clefs, a key signature of two flats, and a common time signature. The first staff begins with a dynamic marking of *mf* and features a sequence of quarter notes, followed by eighth-note pairs, and quarter notes with a fermata. The second staff continues the melody with quarter notes and ends with a double bar line and repeat sign.

Horna II. F

15

Kde jsi můj Ježíši

Musical notation for Horn II, F, measure 15. The piece is in 3/4 time with a key signature of two flats (B-flat and E-flat). The melody is written on two staves. The first staff begins with a treble clef and a key signature of two flats. The second staff continues the melody. The piece concludes with a double bar line and a repeat sign.

16

Ó srdce Páně

Musical notation for Horn II, F, measure 16. The piece is in 6/8 time with a key signature of two flats (B-flat and E-flat). The melody is written on a single staff with a treble clef and a key signature of two flats. The piece concludes with a double bar line and a repeat sign.

17

Ó Jezu, hoste nebeský

Musical notation for Horn II, F, measure 17. The piece is in common time (C) with a key signature of two flats (B-flat and E-flat). The melody is written on two staves. The first staff begins with a treble clef and a key signature of two flats. The second staff continues the melody. The piece concludes with a double bar line and a repeat sign.

18

Pozdraven buď ve svátosti

Musical notation for Horn II, F, measure 18. The piece is in common time (C) with a key signature of two flats (B-flat and E-flat). The melody is written on two staves. The first staff begins with a treble clef and a key signature of two flats. The second staff continues the melody. The piece concludes with a double bar line and a repeat sign.

Horna II. F

19

Svátosti drahá



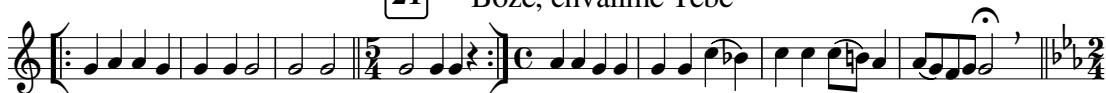
20

Ejhle oběť



21

Bože, chválíme Tebe



22

Linkovy fanfáry



Obsah

1	Fanfára Velehrad	12	Skrytý Bože
2	Kristus vítězí	13	Svatý, Svátý
3	Chvalte ústa	14	Vítej, vítej
4	K svátku tajemnému	15	Kde jsi můj Ježíši
5	Ježíši Králi	16	Ó srdce Páně
6	K nebesům se orla vzletem	17	Ó Jezu, hoste nebeský
7	Vzhůru srdce	18	Pozdraven buď ve svátosti
8	Andělský chlebe	19	Svátosti drahá
9	Jezu Kriste, štědrý kněže	20	Ejhle oběť
10	Klaním se Ti vroucně	21	Bože, chválíme Tebe
11	Pojďte uctít poklonou	22	Linkovy fanfáry
Instrumentace a harmonizace			
č. 2, 3, 4, 7, 8, 9, 10, 11, 12, 13, 15, 17, 18, 19, 20, 22		Petr Strakoš	
č. 1, 5, 6, 14, 16, 21		Miloš Machek	
Opis notového záznamu 11/2017		Josef Chuchma	
Pro čtyřhlasou harmonii jsou nutné tyto hlasy: Kř. I., Kř. II., Tenor a Bas. Ostatní hlasy jsou doplňující.			

