

Křídlovka II. B



Dechová hudba

Písně k průvodu Božího Těla

Kř. II. B

1

Fanfára Velehrad

Moderato

f

Detailed description: This is a single-staff musical score for a fanfare. It begins with a treble clef, a common time signature (C), and a 'Moderato' tempo marking. The music features a series of eighth and sixteenth notes with accents, creating a rhythmic fanfare. The piece concludes with a fermata over a half note and a key signature change to B-flat major, indicated by a B-flat symbol and a 2/4 time signature.

2

Kristus vítězí (fanfára)

f
Slavnostně

mf *f*

Detailed description: This section consists of two staves of musical notation. The top staff has a treble clef, a 2/4 time signature, and a key signature of one flat (B-flat major). It starts with a forte (*f*) dynamic and a 'Slavnostně' (solemnly) marking. The melody is composed of quarter and eighth notes. The bottom staff continues the melody, starting with a mezzo-forte (*mf*) dynamic and ending with a forte (*f*) dynamic. The piece ends with a double bar line and a key signature change to C major, indicated by a C-clef and a 2/4 time signature.

3

Chvalte ústa

Detailed description: This section consists of two staves of musical notation. The top staff has a treble clef, a common time signature (C), and a key signature of one sharp (D major). The melody is primarily composed of quarter notes. The bottom staff continues the melody, featuring a key signature change to D major, indicated by a D-clef and a 2/4 time signature.

4

K svátku tajemnému

Detailed description: This is a single-staff musical score. It begins with a treble clef, a 2/4 time signature, and a key signature of one sharp (D major). The music starts with a repeat sign and a first ending bracket. The melody consists of quarter and eighth notes. The piece concludes with a fermata over a half note.

Kř. II. B

5

Ježíši Králi

Musical score for 'Ježíši Králi'. The score is written for two staves in G-flat major (two flats) and common time (C). The first staff contains the vocal line, and the second staff contains the piano accompaniment. The tempo is marked *mf* (mezzo-forte). The piece concludes with a *rit.* (ritardando) marking and a final sharp sign (#).

6

K nebesům se orla vzletem

Musical score for 'K nebesům se orla vzletem'. The score is written for two staves in G major (one sharp) and common time (C). The first staff contains the vocal line, and the second staff contains the piano accompaniment. The tempo is marked *mf* (mezzo-forte). The piece concludes with a 3/4 time signature change.

7

Vzhůru srdce

Musical score for 'Vzhůru srdce'. The score is written for two staves in G major (one sharp) and 3/4 time. The first staff contains the vocal line, and the second staff contains the piano accompaniment. The piece concludes with a final sharp sign (#).

Kř. II. B

8

Andělský chlebe



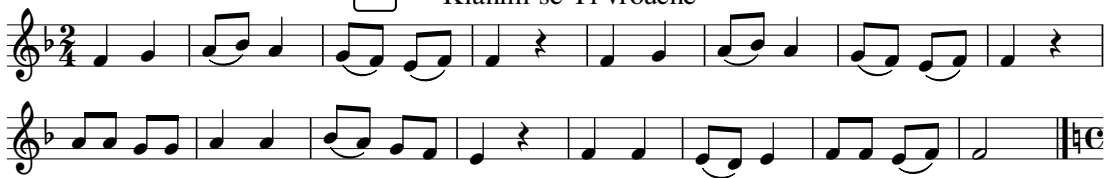
9

Jezu Kriste štědrý kněže



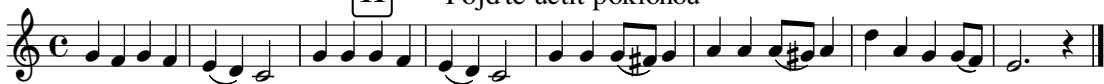
10

Klaním se Ti vroucně



11

Pojďte uctít poklonou



Kř. II. B

12

Skrytý Bože

Musical score for 'Skrytý Bože'. The score is written on two staves in G minor (one flat) and common time (C). The melody consists of quarter and eighth notes, with some slurs and accents. The piece concludes with a double bar line and a key signature change to F major (two flats).

13

Svatý, Svatý

Musical score for 'Svatý, Svatý'. The score is written on a single staff in G minor (one flat) and common time (C). The melody features a mix of quarter, eighth, and sixteenth notes, with slurs and accents. The piece ends with a double bar line.

14

Vítej, vítej

Musical score for 'Vítej, vítej'. The score is written on two staves in G minor (one flat) and common time (C). The melody is marked *mf* (mezzo-forte). It features a mix of quarter, eighth, and sixteenth notes, with slurs and accents. The piece concludes with a double bar line.

Kř. II. B

15

Kde jsi můj Ježíši

Musical notation for item 15, consisting of two staves. The key signature has two flats (B-flat and E-flat), and the time signature is 3/4. The melody is written on a treble clef staff, and the bass line is on a bass clef staff. The piece concludes with a double bar line and a repeat sign.

16

Ó srdce Páně

Musical notation for item 16, consisting of one staff. The key signature has two flats (B-flat and E-flat), and the time signature is 6/8. The melody is written on a treble clef staff. The piece concludes with a double bar line and a sharp sign (C#).

17

Ó Jezu, hoste nebeský

Musical notation for item 17, consisting of two staves. The key signature has one sharp (F#), and the time signature is common time (C). The melody is written on a treble clef staff, and the bass line is on a bass clef staff. The piece features a first ending (1.) and a second ending (2.), both marked with repeat signs. The piece concludes with a double bar line and a sharp sign (C#).

18

Pozdraven buď ve svátosti

Musical notation for item 18, consisting of two staves. The key signature has one sharp (F#), and the time signature is common time (C). The melody is written on a treble clef staff, and the bass line is on a bass clef staff. The piece concludes with a double bar line.

Kř. II. B

19

Svátosti drahá



20

Ejhle oběť



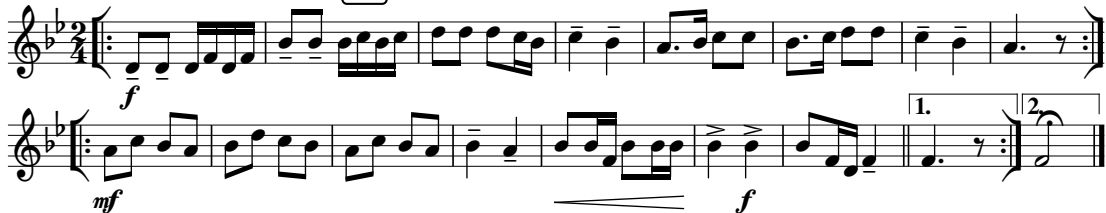
21

Bože, chválíme Tebe



22

Linkovy fanfáry



Obsah

1	Fanfára Velehrad	12	Skrytý Bože
2	Kristus vítězí	13	Svatý, Svátý
3	Chvalte ústa	14	Vítej, vítej
4	K svátku tajemnému	15	Kde jsi můj Ježíši
5	Ježíši Králi	16	Ó srdce Páně
6	K nebesům se orla vzletem	17	Ó Jezu, hoste nebeský
7	Vzhůru srdce	18	Pozdraven buď ve svátosti
8	Andělský chlebe	19	Svátosti drahá
9	Jezu Kriste, štědrý kněže	20	Ejhle oběť
10	Klaním se Ti vroucně	21	Bože, chválíme Tebe
11	Pojďte uctít poklonou	22	Linkovy fanfáry
Instrumentace a harmonizace			
č. 2, 3, 4, 7, 8, 9, 10, 11, 12, 13, 15, 17, 18, 19, 20, 22		Petr Strakoš	
č. 1, 5, 6, 14, 16, 21		Miloš Machek	
Opis notového záznamu 11/2017		Josef Chuchma	
Pro čtyřhlasou harmonii jsou nutné tyto hlasy: Kř. I., Kř. II., Tenor a Bas. Ostatní hlasy jsou doplňující.			

