

Trubka I. B (oblig.)



Dechová hudba

Písně k průvodu Božího Těla

Oblig.

1

Fanfára Velehrad

Moderato



2

Kristus vítězí (fanfára)

Soli

f

Slavnostně



mf



3

Chvalte ústa



4

K svátku tajemnému



Oblig.

5 Ježíši Králi

Musical score for 'Ježíši Králi'. The score is written for two staves. The top staff is in G major (one sharp) and common time (C). The bottom staff is in G major (one sharp) and common time (C). The music features a melody with eighth and sixteenth notes, and a bass line with a triplet of eighth notes. The dynamic marking is *mf*. The piece ends with a double bar line and a sharp sign.

6 K nebesům se orla vzletem

Musical score for 'K nebesům se orla vzletem'. The score is written for two staves. The top staff is in G major (one sharp) and common time (C). The bottom staff is in G major (one sharp) and common time (C). The music features a melody with quarter and eighth notes, and a bass line with a triplet of eighth notes. The dynamic marking is *mf*. The piece ends with a double bar line and a sharp sign.

7 Vzhůru srdce

Musical score for 'Vzhůru srdce'. The score is written for two staves. The top staff is in G major (one sharp) and 3/4 time. The bottom staff is in G major (one sharp) and 3/4 time. The music features a melody with quarter and eighth notes, and a bass line with quarter and eighth notes. The piece ends with a double bar line.

Oblig.

8

Andělský chlebe

Musical notation for 'Andělský chlebe'. It consists of two staves in G major and 6/4 time. The melody is written on a treble clef. The first staff contains the first two measures, and the second staff contains the next four measures, ending with a double bar line and a 3/4 time signature.

9

Jezu Kriste štedrý kněže

Musical notation for 'Jezu Kriste štedrý kněže'. It consists of two staves in G major and 3/4 time. The melody is written on a treble clef. The first staff contains the first two measures, and the second staff contains the next four measures, ending with a double bar line and a 2/4 time signature.

10

Klaním se Ti vroucně

Musical notation for 'Klaním se Ti vroucně'. It consists of two staves in G minor and 2/4 time. The melody is written on a treble clef. The first staff contains the first two measures, and the second staff contains the next four measures, ending with a double bar line and a common time signature.

11

Pojďte uctít poklonou

Musical notation for 'Pojďte uctít poklonou'. It consists of a single staff in common time. The melody is written on a treble clef and contains ten measures, ending with a double bar line.

Oblig.

12

Skrytý Bože

Musical score for 'Skrytý Bože' (No. 12). The score is written for two staves in G minor (one flat) and common time (C). The melody is primarily composed of quarter and eighth notes, with some beamed eighth notes. The piece concludes with a double bar line and a final G minor chord.

13

Svatý, Svatý

Musical score for 'Svatý, Svatý' (No. 13). The score is written for one staff in G minor (one flat) and common time (C). The melody consists of simple quarter and eighth notes, ending with a double bar line.

14

Vítej, vítej

Musical score for 'Vítej, vítej' (No. 14). The score is written for two staves in G minor (one flat) and common time (C). The melody is written on the upper staff, and the lower staff provides a rhythmic accompaniment with beamed eighth notes. The dynamic marking *mf* (mezzo-forte) is indicated at the beginning of the lower staff. The piece concludes with a double bar line.

Oblig.

15

Kde jsi můj Ježíši

Musical score for 'Kde jsi můj Ježíši'. The score is written for two staves in 3/4 time, with a key signature of two flats (B-flat and E-flat). The melody is primarily in the upper register, featuring eighth and quarter notes with some slurs. The accompaniment consists of quarter and eighth notes. The piece concludes with a double bar line and repeat dots.

16

Ó srdce Páně

Musical score for 'Ó srdce Páně'. The score is written for two staves in 6/8 time, with a key signature of two flats (B-flat and E-flat). The melody is in the lower register, featuring eighth and sixteenth notes with many slurs. The accompaniment consists of eighth and sixteenth notes. The piece concludes with a double bar line and a sharp sign indicating a key change to C major.

17

Ó Jezu, hoste nebeský

Musical score for 'Ó Jezu, hoste nebeský'. The score is written for two staves in common time (C), with a key signature of one sharp (F#). The melody is in the upper register, featuring quarter and eighth notes with slurs. The accompaniment consists of quarter and eighth notes. The piece includes a first ending (marked '1.') and a second ending (marked '2.'). It concludes with a double bar line and a sharp sign indicating a key change to C major.

18

Pozdraven buď ve svátosti

Musical score for 'Pozdraven buď ve svátosti'. The score is written for two staves in common time (C), with a key signature of one sharp (F#). The melody is in the upper register, featuring quarter and eighth notes with slurs. The accompaniment consists of quarter and eighth notes. The piece concludes with a double bar line.

Oblig.

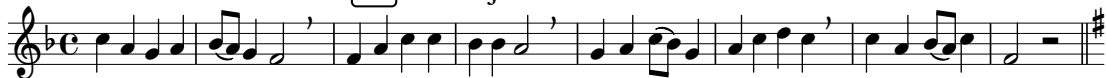
19

Svátosti drahá



20

Ejhle oběť



21

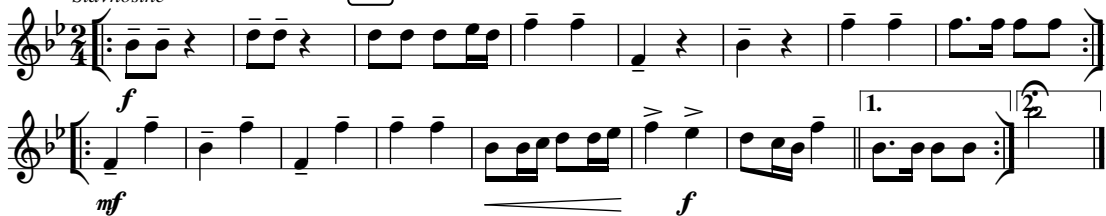
Bože, chválíme Tebe



22

Linkovy fanfáry

Slavnostně



Obsah

1	Fanfára Velehrad	12	Skrytý Bože
2	Kristus vítězí	13	Svatý, Svátý
3	Chvalte ústa	14	Vítej, vítej
4	K svátku tajemnému	15	Kde jsi můj Ježíši
5	Ježíši Králi	16	Ó srdce Páně
6	K nebesům se orla vzletem	17	Ó Jezu, hoste nebeský
7	Vzhůru srdce	18	Pozdraven buď ve svátosti
8	Andělský chlebe	19	Svátosti drahá
9	Jezu Kriste, štědrý kněže	20	Ejhle oběť
10	Klaním se Ti vroucně	21	Bože, chválíme Tebe
11	Pojďte uctít poklonou	22	Linkovy fanfáry
Instrumentace a harmonizace			
č. 2, 3, 4, 7, 8, 9, 10, 11, 12, 13, 15, 17, 18, 19, 20, 22		Petr Strakoš	
č. 1, 5, 6, 14, 16, 21		Miloš Machek	
Opis notového záznamu 11/2017		Josef Chuchma	
Pro čtyřhlasou harmonii jsou nutné tyto hlasy: Kř. I., Kř. II., Tenor a Bas. Ostatní hlasy jsou doplňující.			

