

# Tenor



**Dechová hudba**

**Písně k průvodu Božího Těla**

Tenor

1

# Fanfára Velehrad

Moderato

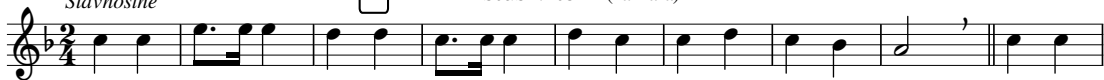


*f*

Slavnostně

2

# Kristus vítězí (fanfára)



*mf*



3

# Chvalte ústa



4

# K svátku tajemnému



Tenor

5

Ježíši Králi

*mf* *rit.*

6

K nebesům se orla vzletem

*mf*

7

Vzhůru srdce

*mf*

Tenor

8

Andělský chlebe

Musical score for 'Andělský chlebe' (Tenor). The score is written on two staves. The first staff begins with a treble clef, a key signature of one sharp (F#), and a 6/4 time signature. The melody consists of quarter and eighth notes, with a fermata over the final note. The second staff continues the melody, ending with a double bar line and a 3/4 time signature.

9

Jezu Kriste štědrý kněže

Musical score for 'Jezu Kriste štědrý kněže' (Tenor). The score is written on two staves. The first staff begins with a treble clef, a key signature of one sharp (F#), and a 3/4 time signature. The melody consists of quarter and eighth notes, with a fermata over the final note. The second staff continues the melody, ending with a double bar line and a 2/4 time signature.

10

Klaním se Ti vroucně

Musical score for 'Klaním se Ti vroucně' (Tenor). The score is written on two staves. The first staff begins with a treble clef, a key signature of two flats (Bb, Eb), and a 2/4 time signature. The melody consists of quarter and eighth notes, with a fermata over the final note. The second staff continues the melody, ending with a double bar line and a common time signature (C).

11

Pojďte uctít poklonou

Musical score for 'Pojďte uctít poklonou' (Tenor). The score is written on a single staff. The first staff begins with a treble clef, a common time signature (C), and a key signature of one sharp (F#). The melody consists of quarter and eighth notes, with a fermata over the final note.

Tenor

12

Skrytý Bože

Musical score for Tenor, piece 12: Skrytý Bože. The score consists of two staves of music in G minor, 4/4 time. The melody is written on a treble clef staff. The first staff contains the first two phrases, and the second staff contains the remaining phrases, ending with a double bar line and a repeat sign.

13

Svatý, Svátý

Musical score for Tenor, piece 13: Svátý, Svátý. The score consists of one staff of music in G minor, 4/4 time. The melody is written on a treble clef staff and ends with a double bar line.

14

Vítej, vítej

Musical score for Tenor, piece 14: Vítej, vítej. The score consists of two staves of music in G minor, 4/4 time. The melody is written on a treble clef staff. The first staff contains the first two phrases, and the second staff contains the remaining phrases, starting with a mezzo-forte (*mf*) dynamic marking and ending with a double bar line.

Tenor

15

Kde jsi můj Ježíši

Musical score for Tenor, measure 15. The score consists of two staves. The top staff is the vocal line in G major, 3/4 time, with lyrics 'Kde jsi můj Ježíši'. The bottom staff is the piano accompaniment. The piece ends with a double bar line and a repeat sign.

16

Ó srdce Páně

Musical score for Tenor, measure 16. The score consists of two staves. The top staff is the vocal line in G major, 6/8 time, with lyrics 'Ó srdce Páně'. The bottom staff is the piano accompaniment. The piece ends with a double bar line and a repeat sign.

17

Ó Jezu, hoste nebeský

Musical score for Tenor, measure 17. The score consists of two staves. The top staff is the vocal line in G major, common time, with lyrics 'Ó Jezu, hoste nebeský'. It features a first ending (1.) and a second ending (2.). The bottom staff is the piano accompaniment. The piece ends with a double bar line and a repeat sign.

18

Pozdraven buď ve svátosti

Musical score for Tenor, measure 18. The score consists of two staves. The top staff is the vocal line in G major, common time, with lyrics 'Pozdraven buď ve svátosti'. The bottom staff is the piano accompaniment. The piece ends with a double bar line and a repeat sign.

Tenor

19

Svátosti drahá



20

Ejhle oběť



21

Bože, chválíme Tebe



22

Linkovy fanfáry

*Slavnostně*



## Obsah

1	Fanfára Velehrad	12	Skrytý Bože
2	Kristus vítězí	13	Svatý, Svátý
3	Chvalte ústa	14	Vítej, vítej
4	K svátku tajemnému	15	Kde jsi můj Ježíši
5	Ježíši Králi	16	Ó srdce Páně
6	K nebesům se orla vzletem	17	Ó Jezu, hoste nebeský
7	Vzhůru srdce	18	Pozdraven buď ve svátosti
8	Andělský chlebe	19	Svátosti drahá
9	Jezu Kriste, štědrý kněže	20	Ejhle oběť
10	Klaním se Ti vroucně	21	Bože, chválíme Tebe
11	Pojďte uctít poklonou	22	Linkovy fanfáry
<b>Instrumentace a harmonizace</b>			
č. 2, 3, 4, 7, 8, 9, 10, 11, 12, 13, 15, 17, 18, 19, 20, 22		Petr Strakoš	
č. 1, 5, 6, 14, 16, 21		Miloš Machek	
Opis notového záznamu 11/2017		Josef Chuchma	
Pro čtyřhlasou harmonii jsou nutné tyto hlasy: Kř. I., Kř. II., Tenor a Bas. Ostatní hlasy jsou doplňující.			

