

# Bas I. F



Dechová hudba  
Písně k průvodu Božího Těla

F bas

1 Fanfára Velehrad

Moderato 2

*f*

Detailed description: This is the first musical piece, 'Fanfára Velehrad'. It is written for bass clef with a key signature of two flats (B-flat and E-flat) and a common time signature (C). The tempo is marked 'Moderato' and the time signature is '2'. The piece begins with a whole rest, followed by a series of eighth and sixteenth notes, some with accents. A dynamic marking of *f* (forte) is present. The piece concludes with a double bar line and a repeat sign.

Slavnostně 8

2 Kristus vítězí (fanfára)

*f*

Detailed description: This is the second musical piece, 'Kristus vítězí (fanfára)'. It is written for bass clef with a key signature of two flats and a 2/4 time signature. The tempo is marked 'Slavnostně' (solemnly) and the time signature is '8'. The piece starts with a whole rest, followed by a series of eighth notes. A dynamic marking of *f* is present. The piece ends with a double bar line and a repeat sign.

3 Chvalte ústa

Detailed description: This is the third musical piece, 'Chvalte ústa'. It is written for bass clef with a key signature of two flats and a common time signature (C). The piece consists of two staves of music. The first staff contains a series of eighth and sixteenth notes, with a triplet of eighth notes. The second staff continues the melody with similar rhythmic patterns. The piece concludes with a double bar line and a repeat sign.

4 K svátku tajemnému

Detailed description: This is the fourth musical piece, 'K svátku tajemnému'. It is written for bass clef with a key signature of two flats and a 2/4 time signature. The piece begins with a repeat sign, followed by a series of eighth and sixteenth notes. A dynamic marking of *f* is present. The piece concludes with a double bar line and a repeat sign.

Bas F

5 Ježíši Králi

Musical score for 'Ježíši Králi' in bass clef, F major, common time. The score consists of three staves. The first staff begins with a dynamic marking of *mf*. The second staff continues the melody. The third staff includes a *rit.* marking and ends with a double bar line.

6 K nebesům se orla vzletem

Musical score for 'K nebesům se orla vzletem' in bass clef, F major, common time. The score consists of two staves. The first staff begins with a whole rest. The second staff continues the melody and ends with a double bar line.

7 Vzhůru srdce

Musical score for 'Vzhůru srdce' in bass clef, F major, 3/4 time. The score consists of two staves. The first staff begins with a whole rest. The second staff continues the melody and ends with a double bar line.

F bas

8

Andělský chlebe

Two staves of musical notation for the piece 'Andělský chlebe'. The first staff begins with a bass clef, a key signature of one flat (B-flat), and a 6/4 time signature. The melody consists of quarter and eighth notes. The second staff continues the melody, ending with a double bar line and a 3/4 time signature.

9

Jezu Kriste štedrý kněže

Two staves of musical notation for the piece 'Jezu Kriste štedrý kněže'. The first staff begins with a bass clef, a key signature of one flat (B-flat), and a 3/4 time signature. The melody features quarter and eighth notes with some slurs. The second staff continues the melody, ending with a double bar line and a 2/4 time signature.

10

Klaním se Ti vroucně

Two staves of musical notation for the piece 'Klaním se Ti vroucně'. The first staff begins with a bass clef, a key signature of two flats (B-flat and E-flat), and a 2/4 time signature. The melody includes quarter, eighth, and sixteenth notes. The second staff continues the melody, ending with a double bar line and a common time signature (C).

11

Pojďte uctít poklonou

Two staves of musical notation for the piece 'Pojďte uctít poklonou'. The first staff begins with a bass clef, a key signature of one flat (B-flat), and a common time signature (C). The melody consists of quarter and eighth notes. The second staff continues the melody, ending with a double bar line.

Bas F

12

Skrytý Bože

Musical score for 'Skrytý Bože' in bass clef, F major, 4/4 time. The score consists of two staves. The first staff begins with a treble clef and a common time signature, which are then changed to a bass clef and 4/4 time. The melody features eighth and sixteenth notes with slurs and accents. The second staff continues the melody with similar rhythmic patterns and concludes with a double bar line.

13

Svatý, Svatý

Musical score for 'Svatý, Svatý' in bass clef, F major, 4/4 time. The score consists of a single staff. The melody is composed of eighth and sixteenth notes with slurs and accents, ending with a double bar line.

14

Vítej, vítej

Musical score for 'Vítej, vítej' in bass clef, F major, 4/4 time. The score consists of two staves. The first staff begins with a treble clef and a common time signature, which are then changed to a bass clef and 4/4 time. The melody features eighth and sixteenth notes with slurs and accents, and includes the dynamic marking *mf*. The second staff continues the melody with similar rhythmic patterns and concludes with a double bar line.

Bas F

15

Kde jsi můj Ježíši

Musical notation for exercise 15, "Kde jsi můj Ježíši". It consists of two staves in bass clef. The key signature has three flats (B-flat, E-flat, A-flat) and the time signature is 3/4. The music features a melodic line with eighth and quarter notes and a bass line with quarter and eighth notes, ending with a double bar line.

16

Ó srdce Páně

Musical notation for exercise 16, "Ó srdce Páně". It consists of two staves in bass clef. The key signature has three flats (B-flat, E-flat, A-flat) and the time signature is 6/8. The music features a melodic line with quarter and eighth notes and a bass line with quarter notes, ending with a double bar line.

17

Ó Jezu, hoste nebeský

Musical notation for exercise 17, "Ó Jezu, hoste nebeský". It consists of two staves in bass clef. The key signature has one flat (B-flat) and the time signature is common time (C). The music features a melodic line with quarter and eighth notes, including first and second endings, and a bass line with quarter notes, ending with a double bar line.

18

Pozdraven buď ve svátosti

Musical notation for exercise 18, "Pozdraven buď ve svátosti". It consists of two staves in bass clef. The key signature has one flat (B-flat) and the time signature is common time (C). The music features a melodic line with quarter and eighth notes and a bass line with quarter and eighth notes, ending with a double bar line.

Bas F

19

Svátosti drahá



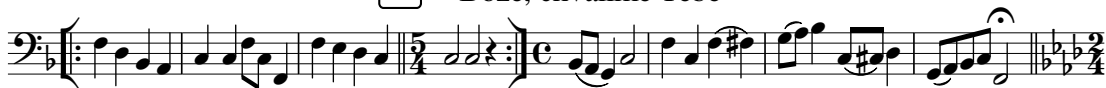
20

Ejhle oběť



21

Bože, chválíme Tebe



22

Linkovy fanfáry



## Obsah

1	Fanfára Velehrad	12	Skrytý Bože
2	Kristus vítězí	13	Svatý, Svátý
3	Chvalte ústa	14	Vítej, vítej
4	K svátku tajemnému	15	Kde jsi můj Ježíši
5	Ježíši Králi	16	Ó srdce Páně
6	K nebesům se orla vzletem	17	Ó Jezu, hoste nebeský
7	Vzhůru srdce	18	Pozdraven buď ve svátosti
8	Andělský chlebe	19	Svátosti drahá
9	Jezu Kriste, štědrý kněže	20	Ejhle oběť
10	Klaním se Ti vroucně	21	Bože, chválíme Tebe
11	Pojďte uctít poklonou	22	Linkovy fanfáry
<b>Instrumentace a harmonizace</b>			
č. 2, 3, 4, 7, 8, 9, 10, 11, 12, 13, 15, 17, 18, 19, 20, 22		Petr Strakoš	
č. 1, 5, 6, 14, 16, 21		Miloš Machek	
Opis notového záznamu 11/2017		Josef Chuchma	
Pro čtyřhlasou harmonii jsou nutné tyto hlasy: Kř. I., Kř. II., Tenor a Bas. Ostatní hlasy jsou doplňující.			

