

# Bas II. B



**Dechová hudba**

**Písně k průvodu Božího Těla**

B bas

1

# Fanfára Velehrad

Moderato **2**

Musical notation for the first piece, 'Fanfára Velehrad'. It is written in bass clef with a key signature of two flats (B-flat and E-flat) and a common time signature (C). The tempo is marked 'Moderato' with a '2' below it. The piece begins with a rest followed by a series of eighth notes, starting with a forte (*f*) dynamic. The notation includes various articulations such as accents and slurs, and ends with a double bar line and a repeat sign.

2

# Kristus vítězí (fanfára)

Slavnostně **8**

Musical notation for the second piece, 'Kristus vítězí (fanfára)'. It is written in bass clef with a key signature of two flats and a 2/4 time signature. The tempo is marked 'Slavnostně' with an '8' below it. The piece starts with a rest and a forte (*f*) dynamic, followed by a steady eighth-note pattern. It concludes with a double bar line and a repeat sign.

3

# Chvalte ústa

Musical notation for the third piece, 'Chvalte ústa'. It is written in bass clef with a key signature of two flats and a common time signature (C). The piece consists of two staves of eighth-note patterns. The first staff features a melodic line with some slurs and accents, while the second staff provides a rhythmic accompaniment. The piece ends with a double bar line and a repeat sign.

4

# K svátku tajemnému

Musical notation for the fourth piece, 'K svátku tajemnému'. It is written in bass clef with a key signature of two flats and a 2/4 time signature. The piece is marked with a repeat sign at the beginning and end. The notation includes eighth-note patterns with slurs and accents, and a forte (*f*) dynamic. It concludes with a double bar line.

Bas B

5 Ježíši Králi

Musical score for 'Ježíši Králi' in bass clef, key of B-flat major (two flats), and common time (C). The score consists of three staves. The first staff begins with a dynamic marking of *mf*. The second staff ends with a double bar line and a repeat sign. The third staff ends with a double bar line, a *rit.* marking, and a fermata over the final note.

6 K nebesům se orla vzletem

Musical score for 'K nebesům se orla vzletem' in bass clef, key of B-flat major (two flats), and 3/4 time. The score consists of two staves. The first staff has a whole rest at the beginning. The second staff ends with a double bar line and a key signature change to B-flat major (two flats) and a 3/4 time signature.

7 Vzhůru srdce

Musical score for 'Vzhůru srdce' in bass clef, key of B-flat major (two flats), and 3/4 time. The score consists of two staves. The first staff has a whole rest at the beginning. The second staff ends with a double bar line.

B bas

8

Andělský chlebe

Two staves of music in bass clef. The first staff starts with a 6/4 time signature, changes to common time (C), and ends with a 6/4 time signature. The second staff starts with a 6/4 time signature and ends with a 3/4 time signature. The music consists of eighth and quarter notes, with some beamed eighth notes and rests.

9

Jezu Kriste štědrý kněže

Two staves of music in bass clef. The first staff starts with a 3/4 time signature. The second staff ends with a 2/4 time signature. The music features quarter and eighth notes, with some beamed eighth notes and rests.

10

Klaním se Ti vroucně

Two staves of music in bass clef. The first staff starts with a 2/4 time signature. The second staff ends with a common time (C) signature. The music includes quarter, eighth, and sixteenth notes, with some beamed eighth notes and rests.

11

Pojďte uctít poklonou

Two staves of music in bass clef. The first staff starts with a common time (C) signature. The music consists of quarter and eighth notes, with some beamed eighth notes and rests.

Bas B

12

Skrytý Bože

Musical score for 'Skrytý Bože' (No. 12). The score is written for two bass staves in a key signature of three flats (B-flat, E-flat, A-flat) and a common time signature (C). The melody is primarily composed of quarter and eighth notes, with some slurs and accents. The accompaniment consists of a steady eighth-note pattern in the lower register.

13

Svatý, Svatý

Musical score for 'Svatý, Svatý' (No. 13). The score is written for two bass staves in a key signature of three flats (B-flat, E-flat, A-flat) and a common time signature (C). The melody features a mix of quarter and eighth notes with slurs. The accompaniment is a consistent eighth-note accompaniment.

14

Vítej, vítej

Musical score for 'Vítej, vítej' (No. 14). The score is written for two bass staves in a key signature of three flats (B-flat, E-flat, A-flat) and a common time signature (C). The melody begins with a dynamic marking of *mf* and consists of quarter and eighth notes with slurs. The accompaniment is an eighth-note accompaniment.

Bas B

15

Kde jsi můj Ježíši

Musical score for 'Kde jsi můj Ježíši' in bass clef, 3/4 time, key of B-flat major. The score consists of two staves. The melody is written on the upper staff, and the bass line is on the lower staff. The piece concludes with a double bar line and a repeat sign.

16

Ó srdce Páně

Musical score for 'Ó srdce Páně' in bass clef, 6/8 time, key of B-flat major. The score consists of two staves. The melody is written on the upper staff, and the bass line is on the lower staff. The piece concludes with a double bar line and a repeat sign.

17

Ó Jezu, hoste nebeský

Musical score for 'Ó Jezu, hoste nebeský' in bass clef, common time, key of B-flat major. The score consists of two staves. The melody is written on the upper staff, and the bass line is on the lower staff. The piece features a first ending (1.) and a second ending (2.), both marked with repeat signs. The key signature changes to B-flat major at the end of the piece.

18

Pozdraven buď ve svátosti

Musical score for 'Pozdraven buď ve svátosti' in bass clef, common time, key of B-flat major. The score consists of two staves. The melody is written on the upper staff, and the bass line is on the lower staff. The piece concludes with a double bar line and a repeat sign.

Bas B

19 Svátosti drahá



20 Ejhle oběť

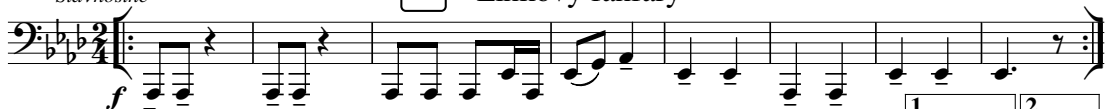


21 Bože, chválíme Tebe



*Slavnostně*

22 Linkovy fanfáry



*mf*

*f*

## Obsah

1	Fanfára Velehrad	12	Skrytý Bože
2	Kristus vítězí	13	Svatý, Svátý
3	Chvalte ústa	14	Vítej, vítej
4	K svátku tajemnému	15	Kde jsi můj Ježíši
5	Ježíši Králi	16	Ó srdce Páně
6	K nebesům se orla vzletem	17	Ó Jezu, hoste nebeský
7	Vzhůru srdce	18	Pozdraven buď ve svátosti
8	Andělský chlebe	19	Svátosti drahá
9	Jezu Kriste, štědrý kněže	20	Ejhle oběť
10	Klaním se Ti vroucně	21	Bože, chválíme Tebe
11	Pojďte uctít poklonou	22	Linkovy fanfáry
<b>Instrumentace a harmonizace</b>			
č. 2, 3, 4, 7, 8, 9, 10, 11, 12, 13, 15, 17, 18, 19, 20, 22		Petr Strakoš	
č. 1, 5, 6, 14, 16, 21		Miloš Machek	
Opis notového záznamu 11/2017		Josef Chuchma	
Pro čtyřhlasou harmonii jsou nutné tyto hlasy: Kř. I., Kř. II., Tenor a Bas. Ostatní hlasy jsou doplňující.			

